



DF BUFFALO


DONG FANG OFFSHORE CO., LTD.

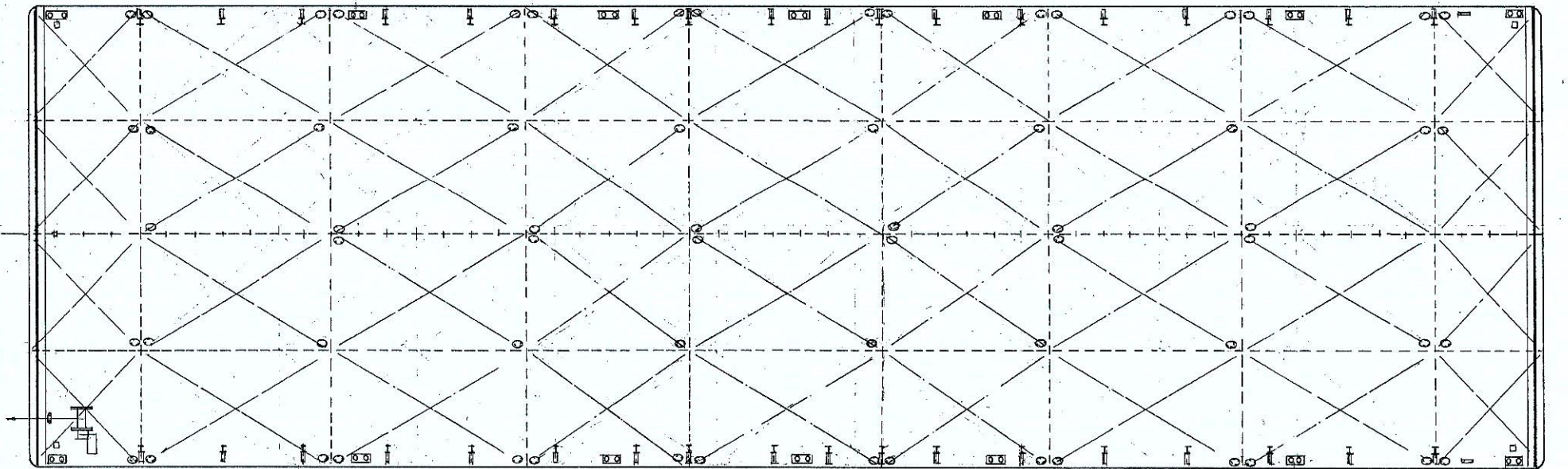
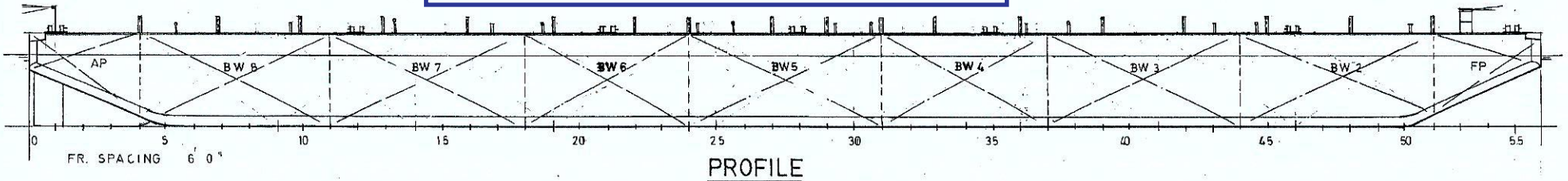
VESSEL INFORMATION

Registry	ROC
Year Built	2016
Classification	CR/GL
Type	Cargo Barge

PRINCIPAL PARTICULARS

LOA	96.56 m
Beam	30.48 m
Depth	6.10 m
DWT	11115T
GRT / NRT	5007/1503
Deck Strength	20 T/m ²
No. of Bulkheads	3 Longitudinal 8 Transverse
Moulded Draught	4.72 m
Deck Equipment	TBT-free controlled depletion polymer (CDP), Exchange flow through

GL  For information only
 ansgor
 Hamburg 2015-01-13 Ref.-No. 15-002396



MAIN PARTICULARS
 LENGTH 330' 0"
 BREADTH 100' 0"
 DEPTH 20' 0"
 DECK LOADING 20 T/M²

SHIPTECHIK SERVICES PTE. LTD.
 CLIENT: MARINTEKNIK SHIPBUILDER (S) P/L
 TITLE: 330' x 100' x 20' BARGE
 GENERAL ARRANGEMENT

2	ALTERED TO OWNERS REQ'S	ST	31.12.14
1	ALTERED TO OWNERS REQ'S	ST	15.11.14

DRWN: ST	DATE: 10.2014	S1598-H1
SCALE: 1/16	HULL: 002	

