



Falcon I / Falcon II 宏隼一號 / 宏隼二號

GENERAL

Build	Singapore 2019
Hull material	Aluminum
Classification	Bureau Veritas / CR I ✕Hull•MACH Light Ship/Fast Utility Vessel Sea Area 3
Vessel owner	Hung Hua Construction Co., Ltd.

DIMENSIONS

Length overall	26.8m
Beam overall	10.5m
Depth at side	4.3m
Draught	1.8m
Deadweight max	25.0t
Cargo deck area	90.0m ²
Deck load	1.5 t/m ²
Gross tonnage	235
Crew	5 persons
(Industrial) personnel	12 (up to 24) persons

TANK CAPACITIES

Fuel oil	30.5 m ³
Fresh water	3.5 m ³
Sewage	0.5 m ³

PERFORMANCES

Speed	25.0 kn
Range at max.speed	1,200 nm

PROPULSION SYSTEM

Main engines	2 x Caterpillar C32 TTA
Total power	2162 bkW
Gearboxes	2 x Reintjes ZWVSA series (two-speed)
Propulsion	2 x Fixed pitch propeller
Bow thrusters	2 x 64 kW, hydraulically driven

ELECTRICAL EQUIPMENT

Network	24V DC, 440/220V 60Hz AC 110 V 60 Hz consumer network
Generator sets	2x 44.0 ekW

DECK LAY-OUT

Anchor equipment	1 x 150kg SHHP Pool TW, chain, electric winch
Fendering	Heavy-duty bow fender, rubber "D" type at sides.
Moonpool	
Rescue zone	
Foldable deck crane	Heila HLM 20-3S

SHIP SYSTEMS

Fuel transfer system	2 x pump, electrically driven
Engine room ventilation	2 x extraction fan, 8,000 m ³ /hr each (one fan in each engine room)
Air-conditioning	89,000 BTU/hr
Fire extinguishing	Novec 1230 in engine rooms
Fuel cargo system	Connected to fuel transfer system

ACCOMMODATION

Bridge deck	Wheelhouse, crew mess
Main deck	Personnel area, lounge/office space, crew cabins, wet gear room, pantry, mess room, sanitary spaces.
Lower deck	Storage

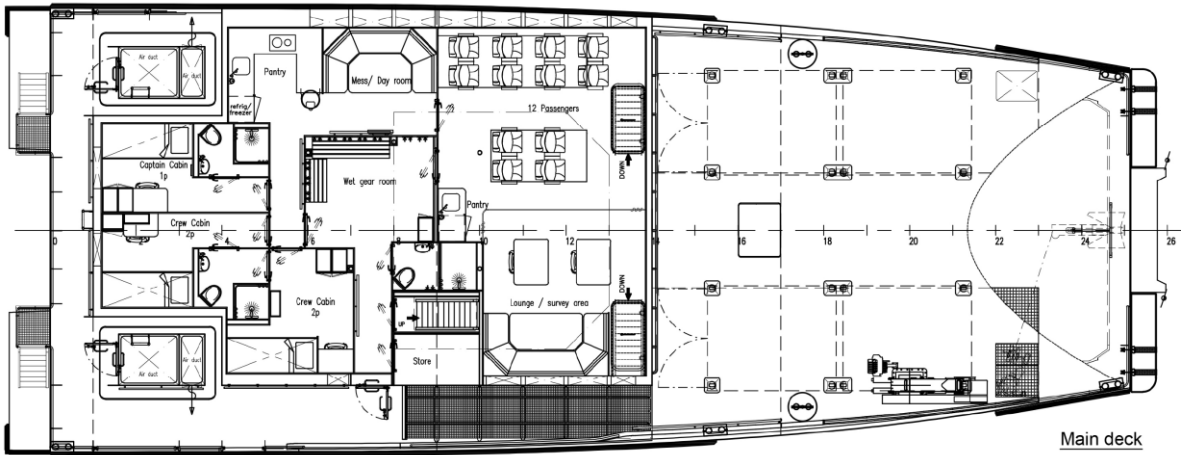
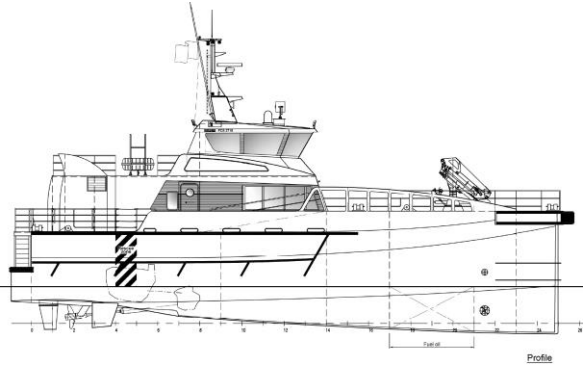
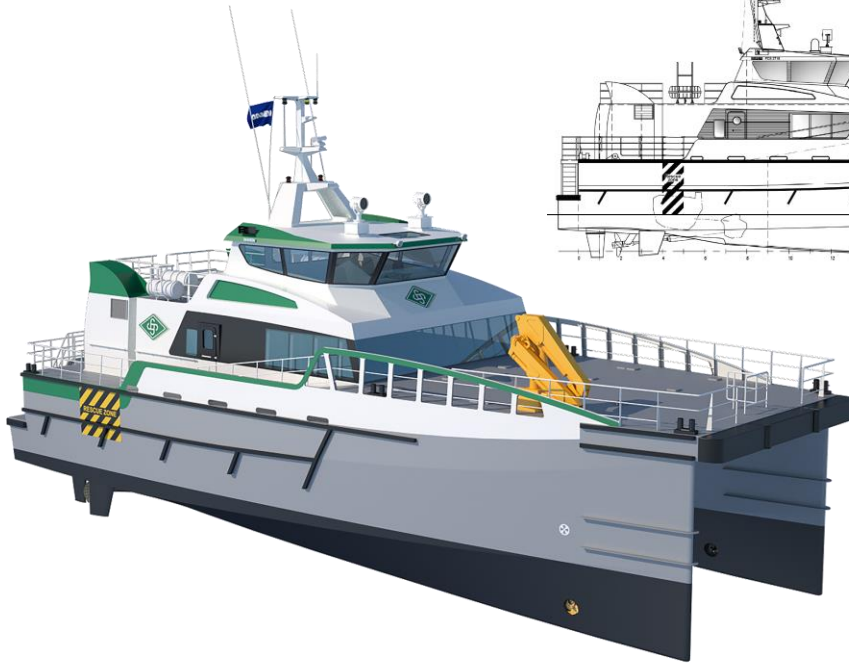
NAUTICAL AND COMMUNICATION EQUIPMENT

Integrated navigation system	
Remote monitoring system	
Searchlight	1x
Radar	1x X-band
ECDIS	1x
AIS	1x
Compass	1x Magnetic, 1x GPS
Autopilot	1x
Echo sounder	1x
Internal communications	Intercom and loudhailer
CCTV system	
External communications	GMDSS A2
Weather system	1x

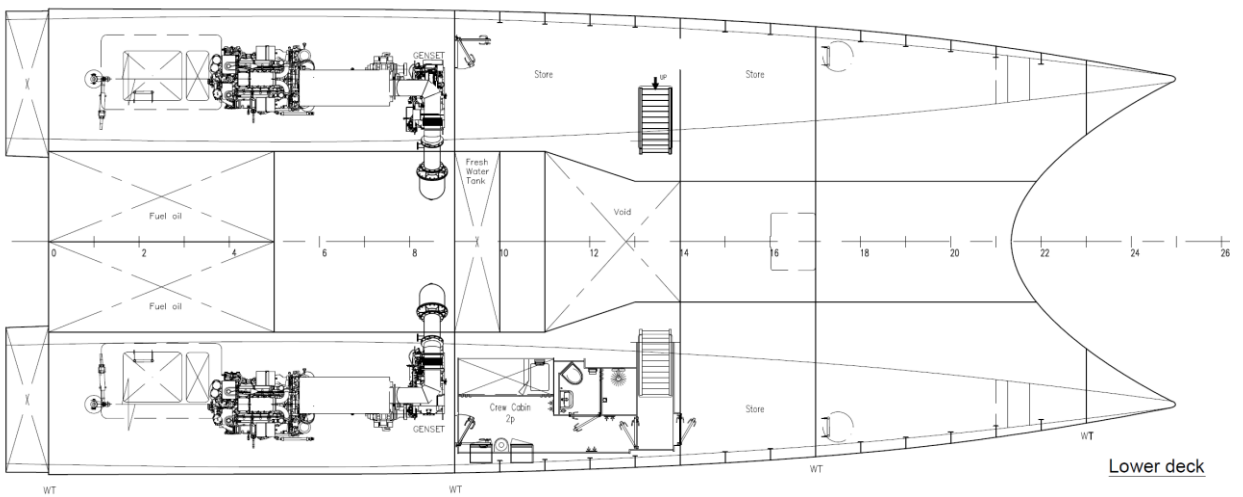


Falcon I / Falcon II

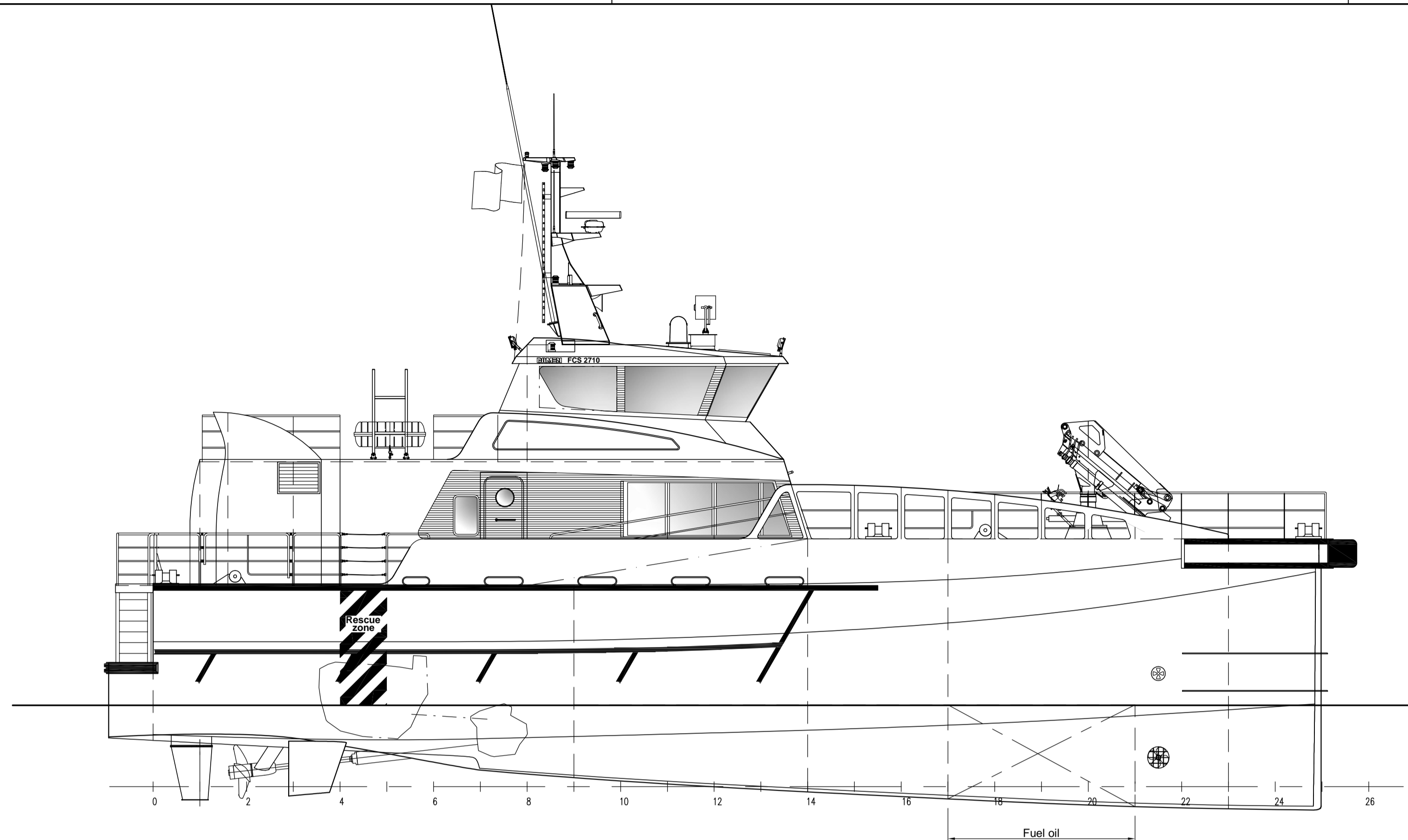
宏隼一號 / 宏隼二號



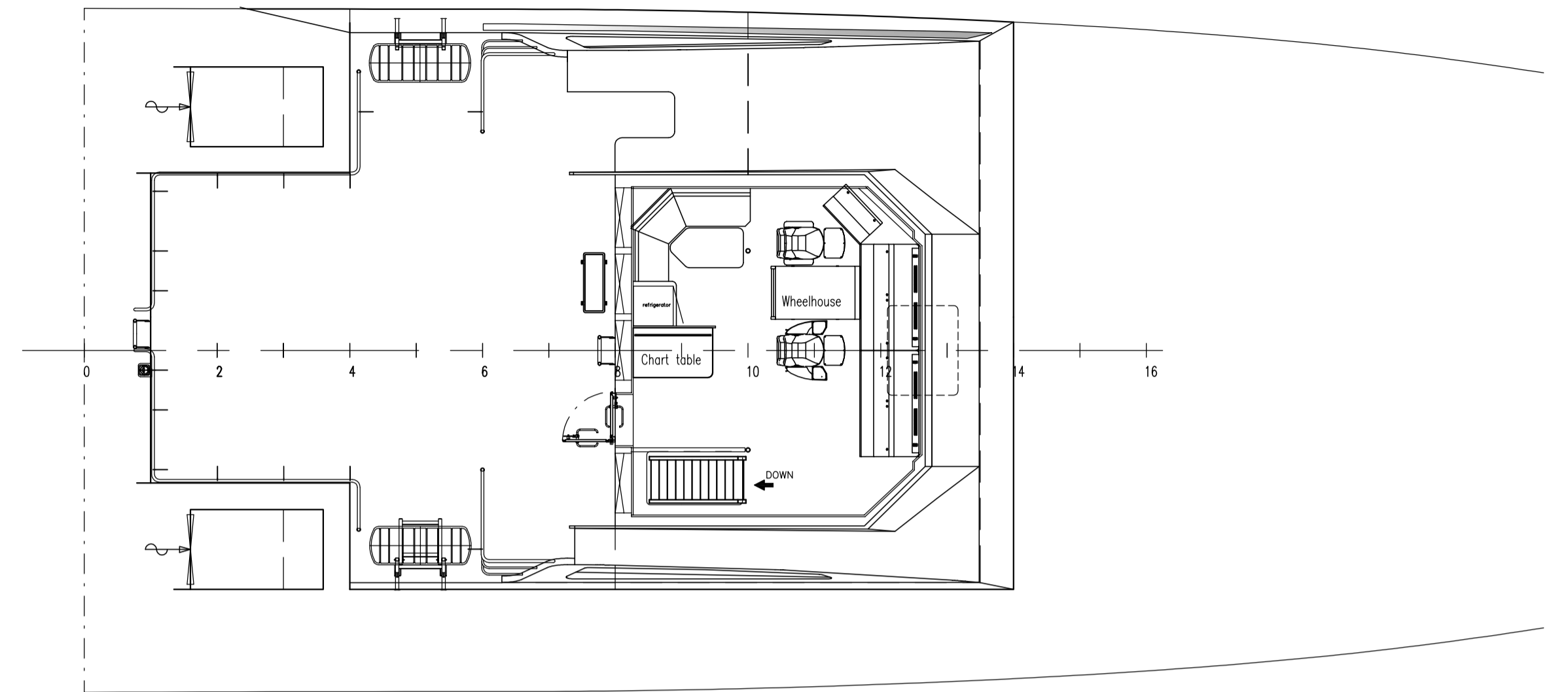
Main deck



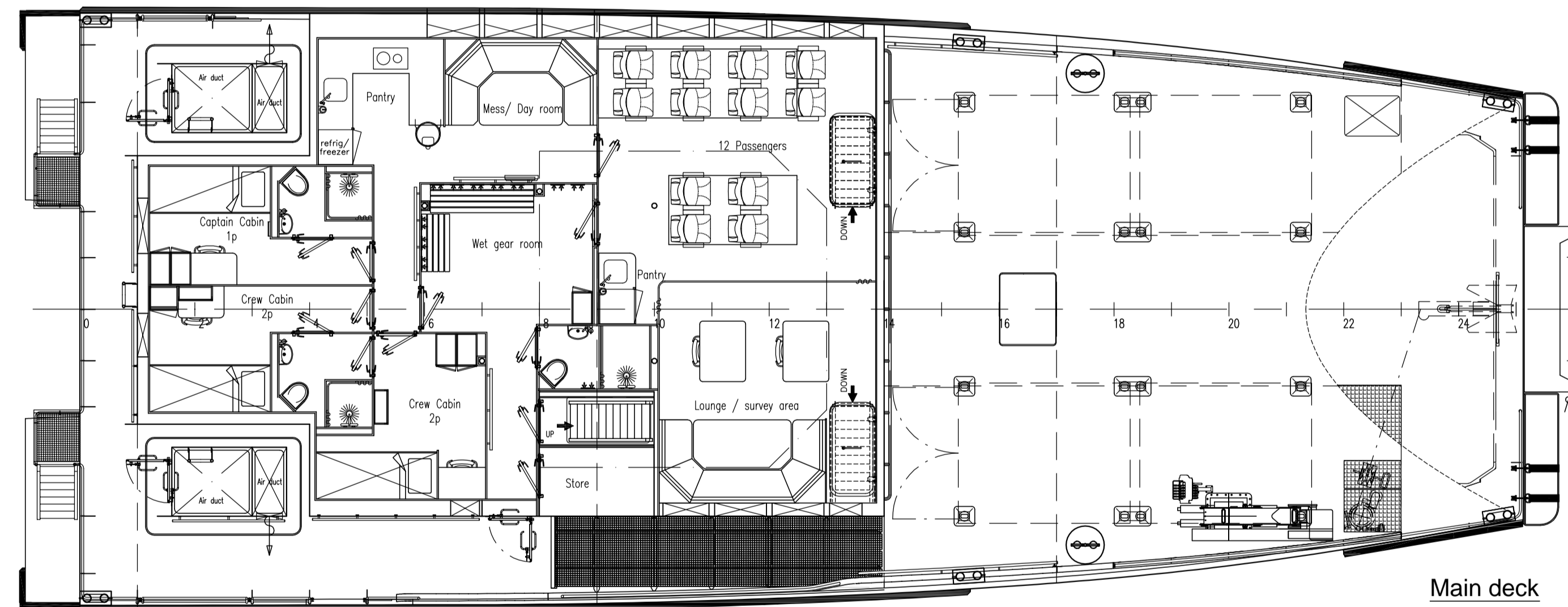
Lower deck



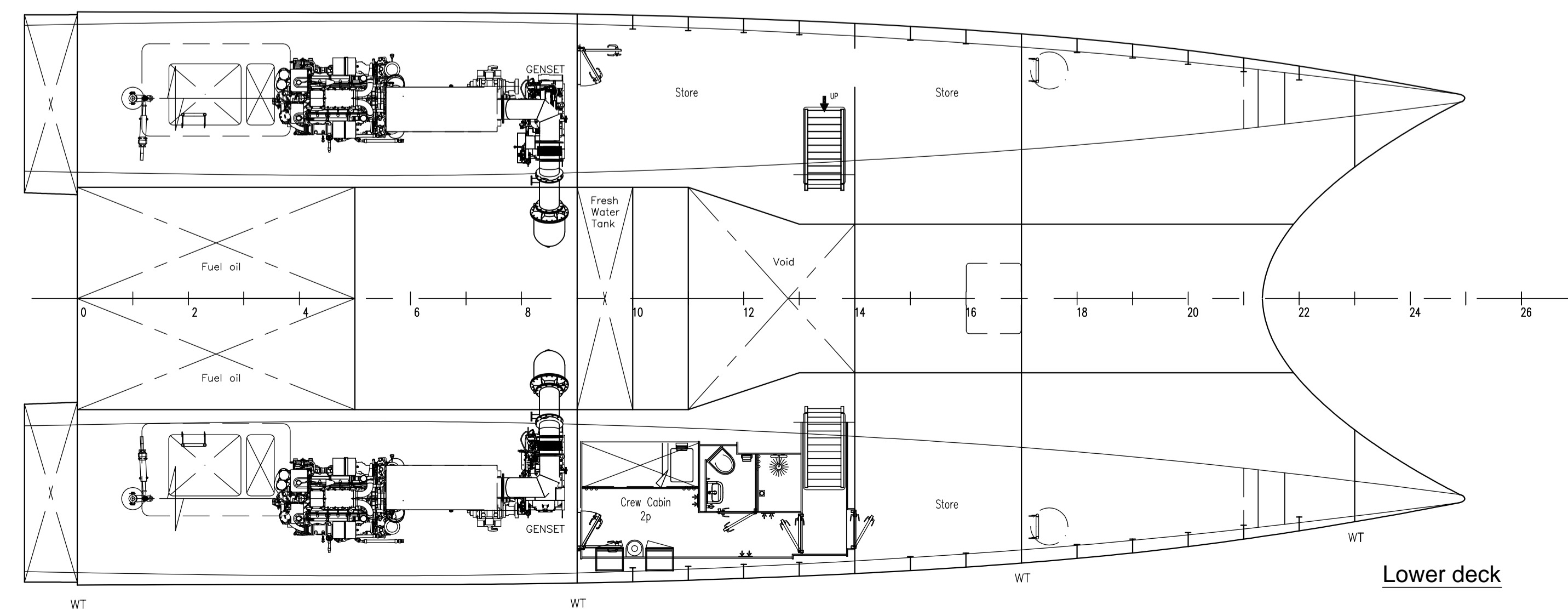
Profile



Bridge deck



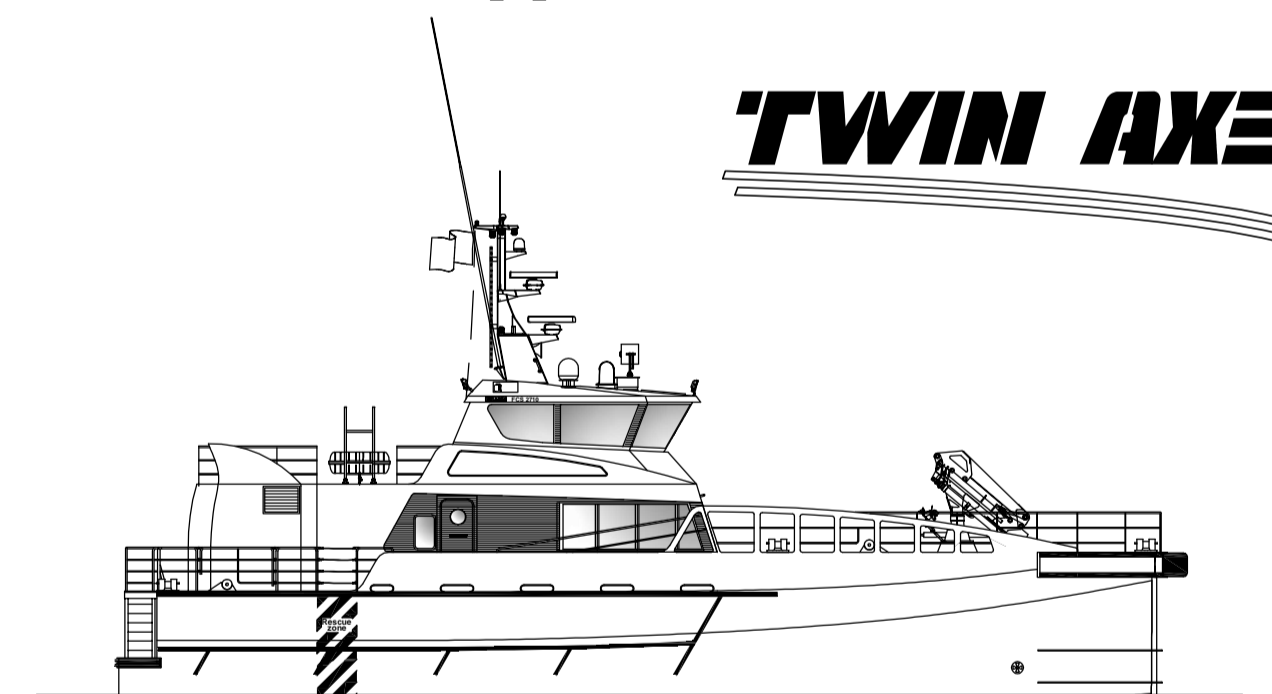
Main deck



Lower deck

Damen Fast Crew Supplier® 2710

TWIN AXE



Main dimensions	
Length overall	26,80 m
Beam overall	10,50 m
Depth at sides	4,30 m
Draught aft (approx.)	2,30 m

DAMEN		DAMEN SHIPYARDS GORINCHEM		
Industrieterrein Avelingen West 20 4202 MS Gorinchem		P.O. Box 1 4200 AA Gorinchem The Netherlands		
phone +31 (0) 183 63 99 11		fax +31 (0) 183 63 21 99		
info@damen.com		www.damen.com		
Format	A1	General Arrangement		
Scale	1:75			
Units	mm			
Drawn	OH/THEM			
Checked	Standard Type	FCS 2710	Project ID	Stock 2
Approved	S.C.No. - Project Shiptype	- Plan	Sheet	Date
Drawing ID: 265838 - FCS 2710		- GA	001	2019.05.17
IFS Doc No.		COPYRIGHT DAMEN SHIPYARDS GROUP		

ITEMS MARKED ARE OPTIONAL EQUIPMENT