



FALCON NO.1

GENERAL

Build	Singapore 2019
Hull material	Aluminum
Classification	Bureau Veritas / CR I ✱Hull•MACH Light Ship/Fast Utility Vessel Sea Area 3
Vessel owner	DONG FANG OFFSHORE CO., LTD.

DIMENSIONS

Length overall	26.8m
Beam overall	10.5m
Depth at side	4.3m
Draught	1.8m
Deadweight max	25.0t
Cargo deck area	90.0m ²
Deck load	1.5 t/m ²
Gross tonnage	235
Crew	5 persons
(Industrial) personnel	12 (up to 24) persons

TANK CAPACITIES

Fuel oil	30.5 m ³
Fresh water	3.5 m ³
Sewage	0.5 m ³

PERFORMANCES

Speed	25.0 kn
Range at max.speed	1,200 nm

PROPULSION SYSTEM

Main engines	2 x Caterpillar C32 TTA
Total power	2162 bkW
Gearboxes	2 x Reintjes ZWVSA series (two-speed)
Propulsion	2 x Fixed pitch propeller
Bow thrusters	2 x 64 kW, hydraulically driven

ELECTRICAL EQUIPMENT

Network	24V DC, 440/220V 60Hz AC 110 V 60 Hz consumer network
Generator sets	2x 44.0 ekW

DECK LAY-OUT

Anchor equipment	1 x 150kg SHHP Pool TW, chain, electric winch
Fendering	Heavy-duty bow fender, rubber “D” type at sides.
Moonpool	
Rescue zone	
Foldable deck crane	Heila HLM 20-3S

SHIP SYSTEMS

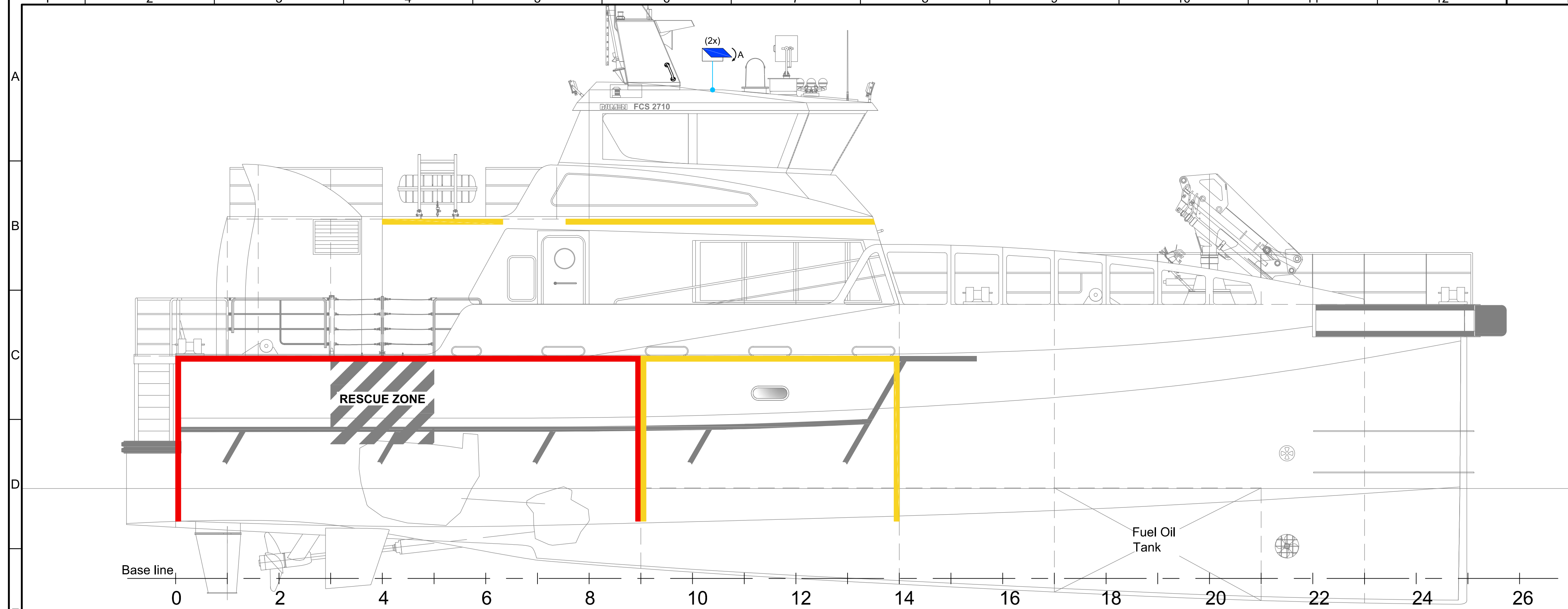
Fuel transfer system	2 x pump, electrically driven
Engine room ventilation	2 x extraction fan, 8,000 m3/hr each (one fan in each engine room)
Air-conditioning	89,000 BTU/hr
Fire extinguishing	Novec 1230 in engine rooms
Fuel cargo system	Connected to fuel transfer system

ACCOMMODATION

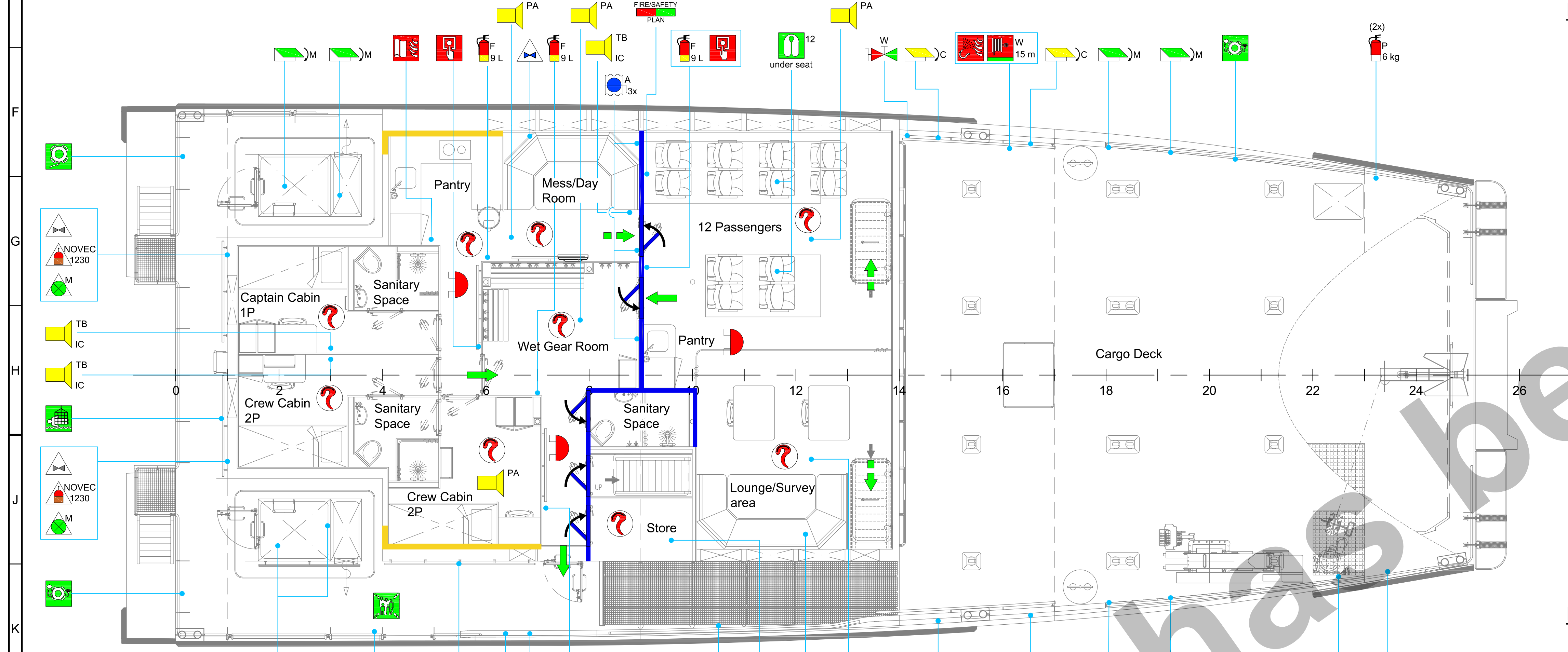
Bridge deck	Wheelhouse, crew mess
Main deck	Personnel area, lounge/office space, crew cabins, wet gear room, pantry, mess room, sanitary spaces.
Lower deck	Storage

NAUTICAL AND COMMUNICATION EQUIPMENT

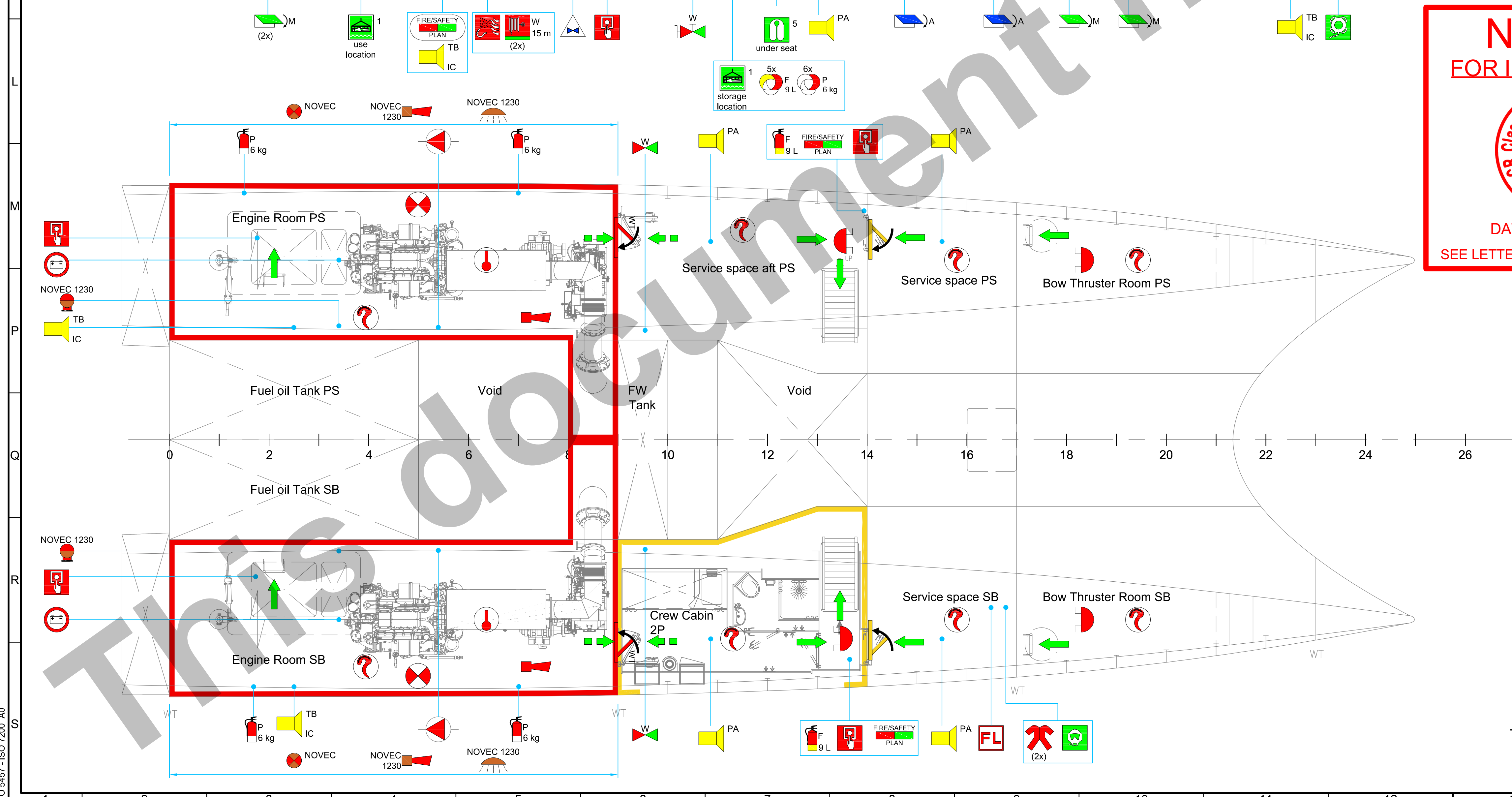
Integrated navigation system	
Remote monitoring system	
Searchlight	1x
Radar	1x X-band
ECDIS	1x
AIS	1x
Compass	1x Magnetic, 1x GPS
Autopilot	1x
Echo sounder	1x
Internal communications	Intercom and loudhailer
CCTV system	
External communications	GMDSS A2
Weather system	1x



PROFILE



MAIN DECK



BELOW MAIN DECK

LIFE SAVING APPLIANCES		
SYMBOL	QTY.	DESCRIPTION
	1	FIRE CONTROL & SAFETY PLAN IN WATERTIGHT CONTAINER
	4	FIRE CONTROL & SAFETY PLAN
	1	ASSEMBLY STATION
	-	PRIMARY ESCAPE ROUTE
	-	SECONDARY ESCAPE ROUTE
	1	MUSTER LIST
	1	FIRST AID KIT, TYPE A
	20	LIFERAFT FOR 20 PERSONS
	2	LIFEBUOY WITH LIGHT AND SMOKE
	2	LIFEBUOY WITH LINE
	20	LIFEJACKET
	1	SEARCH AND RESCUE TRANSPONDER (S.A.R.T.)
	1	EMERGENCY POSITION INDICATING RADIO BEACON (E.P.I.R.B.)
	2	TWO-WAY VHF RADIOTELEPHONE APPARATUS (G.M.D.S.S.)
	2	SMOKE SIGNAL
	4	ROCKET PARACHUTE FLARES (SET OF 3 PIECES)
	1	RED HANDHELD FLARES (SET OF 6 PIECES)
	4	LINE THROWING APPLIANCE
	1	INTERCOM AND PUBLIC ADDRESS INSTALLATION
	7	TALK-BACK INTERCOM
	9	PUBLIC ADDRESS SPEAKER
	2	REMOTE CONTROL FOR COOLING WATER VALVES
	1	RECOVERY NET
	1	JASON CRADLE
	1	SELF-CONTAINED BREATHING APPARATUS READY TO USE WITH TWO SPARE CHARGES FOR EACH APPARATUS
	2	PROTECTIVE CLOTHING

FIRE LOCKER CONTENTS:	
1	FIREMAN'S AXE
1	EMERGENCY FLASHLIGHT
1	FIRE PROTECTIVE SUIT
1	PAIR OF FIREMAN'S BOOTS
1	PAIR OF FIREMAN'S GLOVES
1	FIREMAN'S HELMET
1	BREATHING APPARATUS + 2 SPARE BOTTLES
1	SAFETY HARNESS + 30 m FIREPROOF LIFELINE
1	CROWBAR

NOTES

* 2nd CO2 extinguisher intended as spare as per IACS 99 4.5.4.1

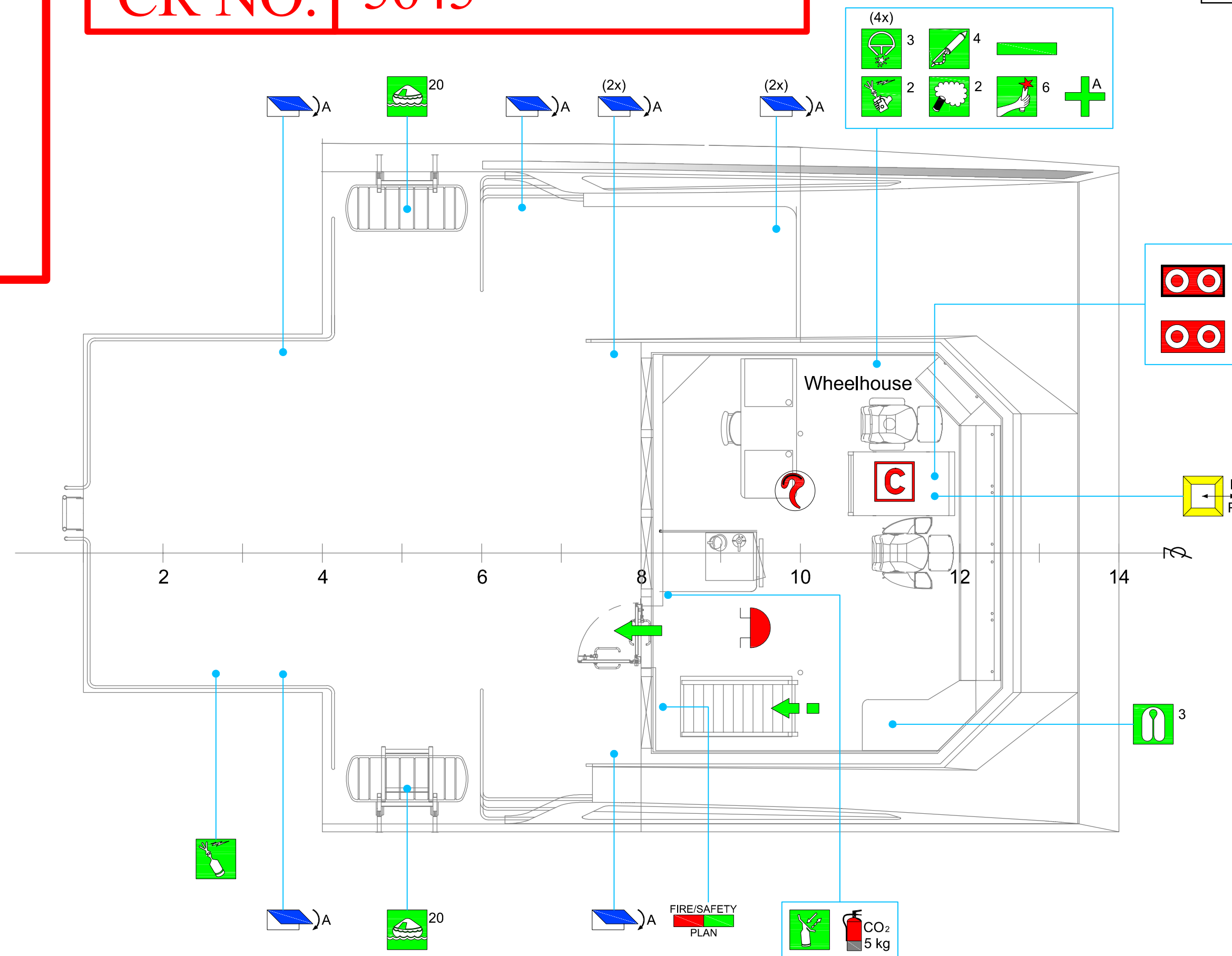
FIRE CONTROL PLAN		
SYMBOL	QTY.	DESCRIPTION
	-	A-60 FIRE RESISTING DIVISION
	-	A-30 min FIRE RESISTING DIVISION
	-	B-0 SMOKE TIGHT DIVISION
	2	SELF-CLOSING FIRE DOOR OF A-60
	2	SELF-CLOSING FIRE DOOR OF A-30
	5	SELF-CLOSING DOOR OF B-0
	12	CLOSING DEVICE FOR VENTILATION IN ACCOMMODATION
	2	CLOSING DEVICE FOR VENTILATION IN CARGO SPACE
	8	CLOSING DEVICE FOR VENTILATION IN MACHINERY SPACE
	2	SPACE MONITORED BY HEAT DETECTOR(S)
	18	SPACE MONITORED BY SMOKE DETECTOR(S)
	2	SPACE PROTECTED BY NOVEC 1230
	2	NOVEC ALARM LIGHT
	2	NOVEC 1230 ALARM HORN
	2	FIXED NOVEC 1230 INSTALLATION
	8	GENERAL ALARM / FIRE ALARM BELL
	2	GENERAL ALARM LIGHT
	2	GENERAL ALARM / FIRE ALARM HORN
	2	FIRE MAIN SECTION VALVE
	2	FIRE PUMP (25 m³/hr, 3.5 bar)
	2	FIRE HYDRANT
	2	HOSE BOX WITH SPRAY / JET FIRE NOZZLE
	3	FIRE HOSE - WATER
	5	FOAM EXTINGUISHER
	6	POWDER EXTINGUISHER
	2	CO2 EXTINGUISHER
	5	SPARE CHARGES FOR FOAM EXTINGUISHER
	6	SPARE CHARGES FOR POWDER EXTINGUISHER
	1	CONTROL STATION
	1	CONTROL PANEL FOR FIRE DETECTION AND ALARM SYSTEM
	1	EMERGENCY STOP MAIN ENGINES
	1	PUSH-BUTTON / SWITCH FOR GENERAL / FIRE ALARM
	1	STOP MAIN ENGINES
	2	EMERGENCY BATTERY
	8	MANUALLY OPERATED CALL POINT
	4	FIRE FLAP IN MACHINERY SPACE
	1	VENTILATION REMOTE SHUT-OFF ACCOMMODATION
	3	FIRE DAMPER IN ACCOMMODATION SPACE
	1	FIRE DAMPER REMOTE SHUT-OFF ACCOMMODATION
	2	REMOTE CONTROL FOR FUEL OIL VALVES
	2	REMOTE CONTROL NOVEC 1230 RELEASE
	1	FIRE BLANKET
	1	FIRE LOCKER

NOTED
FOR INFORMATION

DATE 2023/09/12
SEE LETTER 2023-36077-TR-KHL

FOR INDEPENDENT SURVEY ONLY

CR NO. 5645



BRIDGE DECK

Damen
Fast Crew Supplier 2710

Type of ship
Light ship/ Fast Utility Vessel

Ships name: FALCON 1
Keel laying date: 2019
IMO 9884057

Principal dimensions:
Length o.a. 26,70 m
Beam o.a. 10,30 m
Depth at sides 4,30 m
Draught (approx.) 2,40 m

Capacity:
Industrial personnel: 12
Crew: 6

E01 07-08-2023		CE	Update client request - client responsibility	
D04 06-04-2020		JSOU01	JSOU01	Renamed Cargo space BMDk to Service space
D03 02-04-2020		JSOU01	CSC	Changed compartment names
D02 27-01-2020		CSC	RROOV	modified indication CO2 charges
D01 21-01-2020		CCAS01	CSC	Add door at FR14 PS below maindeck
Rev	Date	Drawn	Checked	Revision text
Projection 				
Format				DAMEN SHIPYARDS GORINCHEM
Scale		Industrieterrein Aardvink West 2002 MM		P.O. Box 1 4500 MM Gorinchem The Netherlands
Units		mm		phone +31 (0) 183 83 99 11 fax +31 (0) 183 83 21 89 info@damen.nl www.damen.nl
Fire and safety plan				
...				
Doc class DRAW-2D		Drawn	SDW	Derived from
Project No.		Function 570	Sequence	Checked
Yard No.		Section/Compartment		Document number
HB		COPYRIGHT DAMEN SHIPYARDS GROUP		3821548
1		2		3
1		2		3
1		2		3
1		2		3
1		2		3
1		2		3
1		2		3
1		2		3
1		2		3
1		2		3
1		2		3
1		2		3
1		2		3
1		2		3
1		2		3
1		2		3
1		2		3
1		2		3
1		2		3
1		2		3
1		2		3
1		2		3
1		2		3
1		2		3
1		2		3
1		2		3
1		2		3
1		2		3
1		2		3
1		2		3
1		2		3
1		2		3
1		2		3
1		2		3
1		2		3
1		2		3
1		2		3
1		2		3
1		2		3
1		2		3
1		2		3
1		2		3
1		2		3
1		2		3
1		2		3
1		2		3
1		2		3
1		2		3
1		2		3
1		2		3
1		2		3
1		2		3
1		2		3
1		2		3
1		2		3
1		2		3
1		2		3
1		2		3
1		2		3
1		2		3
1		2		3
1		2		3
1		2		3
1		2		3
1		2		3
1		2		3
1		2		3
1		2		3
1		2		3
1		2		3
1		2		3
1		2		3
1		2		3
1		2		3
1		2		3
1		2		3
1		2		3
1		2		3
1		2		3
1		2		3
1		2		3
1		2		3
1		2		3
1		2		3
1		2		3
1		2		3
1		2		3
1		2		3
1		2		3
1		2		3
1		2		3
1		2		3
1		2		3
1		2		3
1		2		3
1		2		3
1		2		3
1		2		3
1		2		3
1		2		3
1		2		3
1		2		3
1		2		3
1		2		3
1		2		3
1		2		3
1		2		3
1		2		3
1		2		3
1		2		3
1		2		3
1		2		3
1		2		3
1		2		3
1		2		3
1		2		3
1		2		3
1		2		3
1		2		3
1		2		3
1		2		3
1		2		3
1		2		3
1		2		3
1		2		3
1		2		3
1		2		3
1		2		3
1		2		3
1		2		3
1		2		3
1		2		3
1		2		3
1		2		3
1		2		3
1		2		3
1		2		3
1		2		3
1		2		3
1		2		3
1		2		3
1		2		3
1		2		3
1		2		3
1		2		3
1		2		3
1		2		3
1		2		3
1		2		3
1		2		3
1		2		3
1		2		3
1		2		3
1		2		3
1		2		3
1		2		3
1		2		3
1		2		3
1		2		3
1		2		3
1		2		3
1		2		3
1		2		3
1		2		3
1		2		3
1		2		3
1		2		3
1		2		3
1		2		3
1		2		3
1		2		3
1		2		3
1		2		3
1		2		3
1		2		3
1		2		