



FALCON NO.5

GENERAL

Build	Singapore 2019
Hull material	Aluminum
Classification	Bureau Veritas / CR I ✕Hull•MACH Light Ship/Fast Utility Vessel Sea Area 3
Vessel owner	DONG FANG OFFSHORE CO., LTD.

DIMENSIONS

Length overall	26.8m
Beam overall	10.5m
Depth at side	4.3m
Draught	1.8m
Deadweight max	25.0t
Cargo deck area	90.0m ²
Deck load	1.5 t/m ²
Gross tonnage	235
Crew	5 persons
(Industrial) personnel	12 (up to 24) persons

TANK CAPACITIES

Fuel oil	30.5 m ³
Fresh water	3.5 m ³
Sewage	0.5 m ³

PERFORMANCES

Speed	25.0 kn
Range at max.speed	1,200 nm

PROPULSION SYSTEM

Main engines	2 x Caterpillar C32 TTA
Total power	2162 bkW
Gearboxes	2 x Reintjes ZWVSA series (two-speed)
Propulsion	2 x Fixed pitch propeller
Bow thrusters	2 x 64 kW, hydraulically driven

ELECTRICAL EQUIPMENT

Network	24V DC, 440/220V 60Hz AC 110 V 60 Hz consumer network
Generator sets	2x 44.0 ekW

DECK LAY-OUT

Anchor equipment	1 x 150kg SHHP Pool TW, chain, electric winch
Fendering	Heavy-duty bow fender, rubber “D” type at sides.
Moonpool	
Rescue zone	
Foldable deck crane	Heila HLM 20-3S

SHIP SYSTEMS

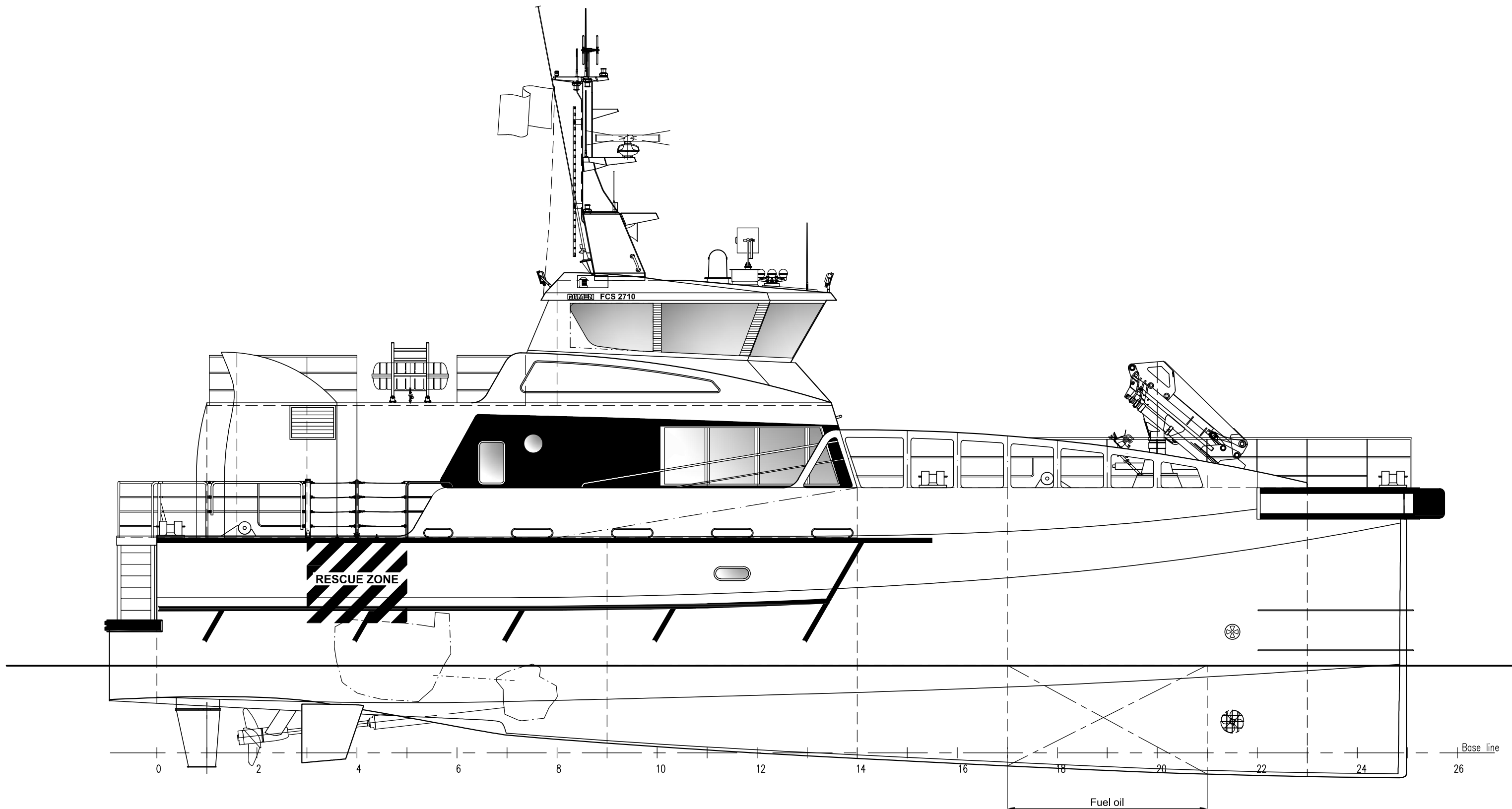
Fuel transfer system	2 x pump, electrically driven
Engine room ventilation	2 x extraction fan, 8,000 m3/hr each (one fan in each engine room)
Air-conditioning	89,000 BTU/hr
Fire extinguishing	Novec 1230 in engine rooms
Fuel cargo system	Connected to fuel transfer system

ACCOMMODATION

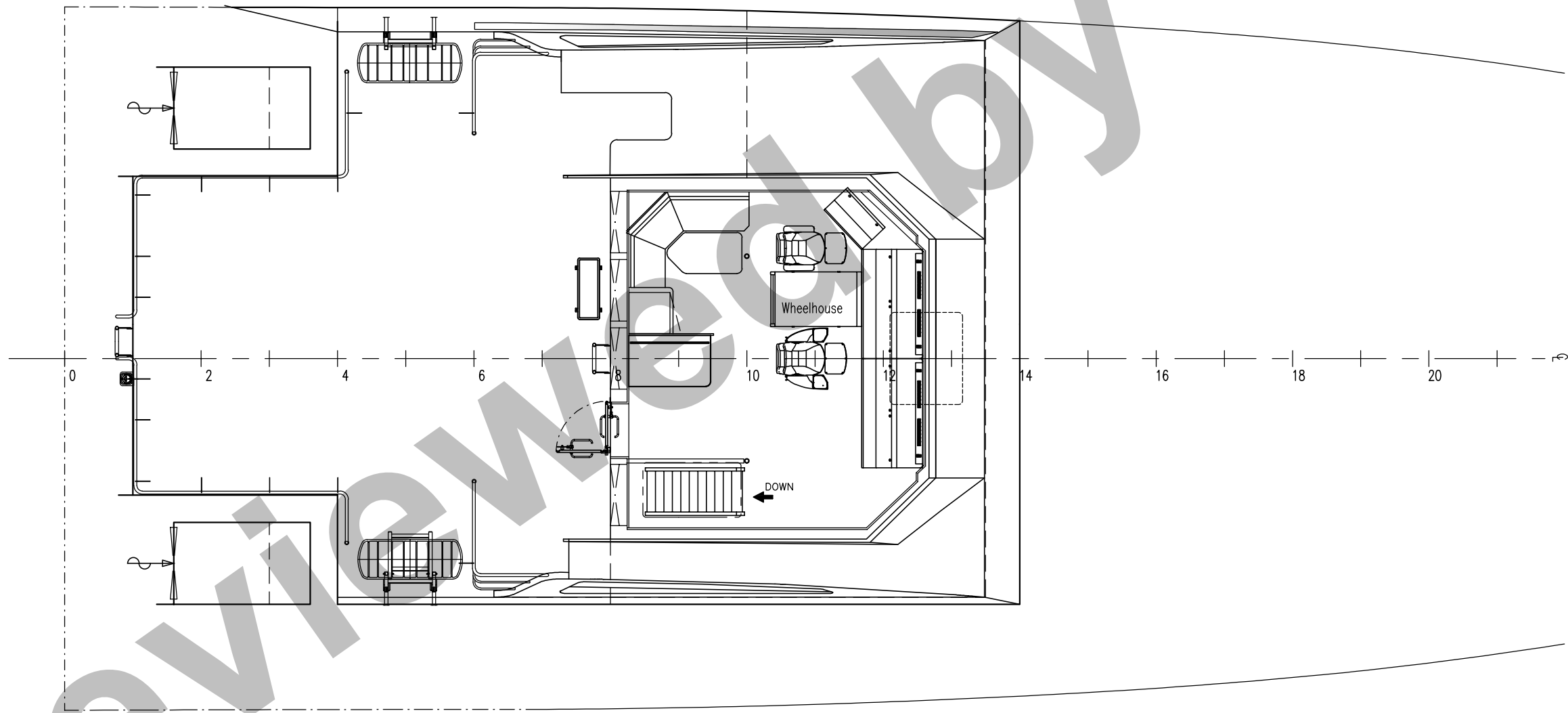
Bridge deck	Wheelhouse, crew mess
Main deck	Personnel area, lounge/office space, crew cabins, wet gear room, pantry, mess room, sanitary spaces.
Lower deck	Storage

NAUTICAL AND COMMUNICATION EQUIPMENT

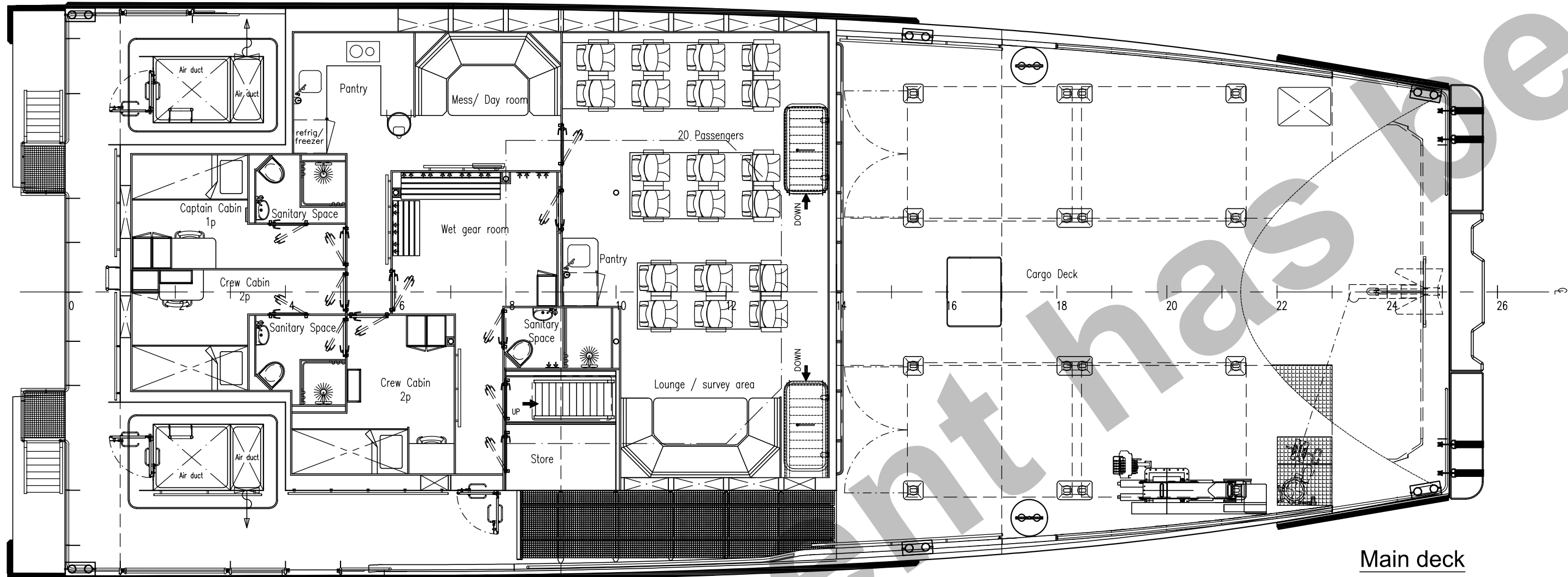
Integrated navigation system	
Remote monitoring system	
Searchlight	1x
Radar	1x X-band
ECDIS	1x
AIS	1x
Compass	1x Magnetic, 1x GPS
Autopilot	1x
Echo sounder	1x
Internal communications	Intercom and loudhailer
CCTV system	
External communications	GMDSS A2
Weather system	1x



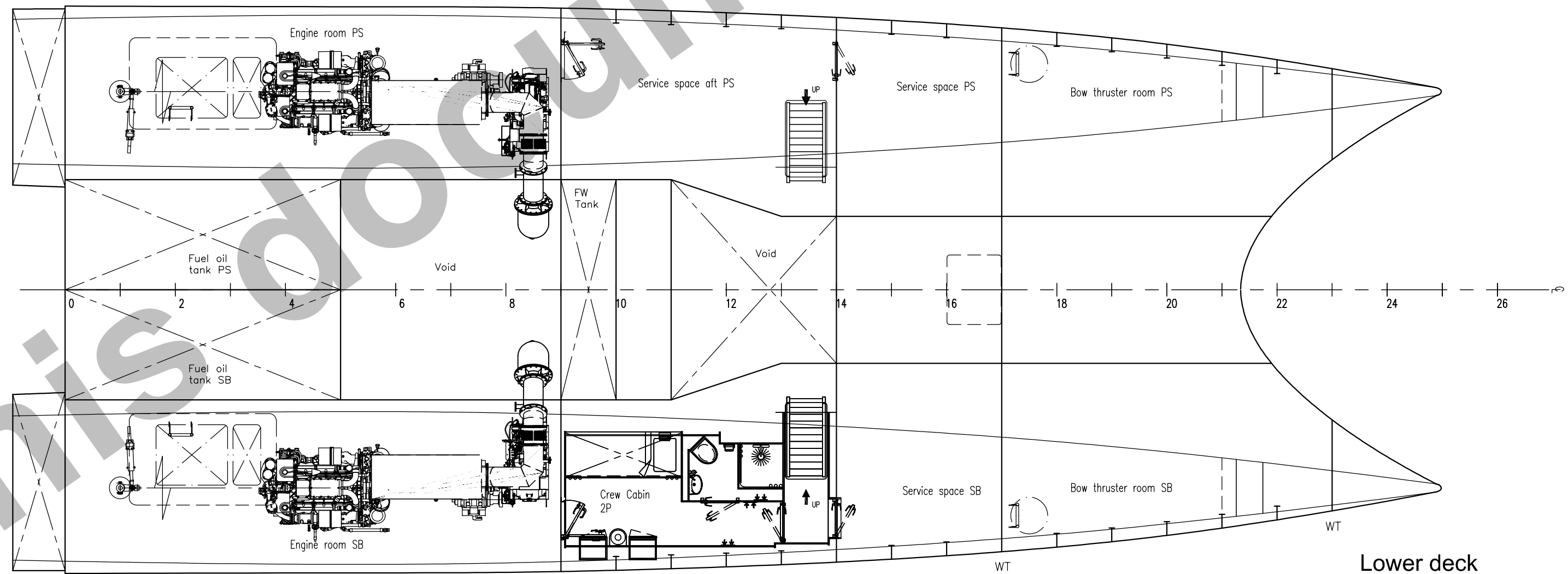
Profile



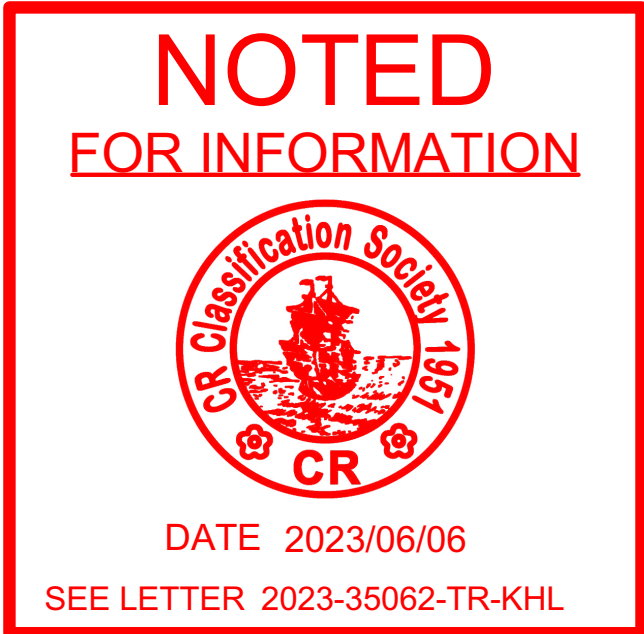
Bridge deck



Main deck



Lower deck

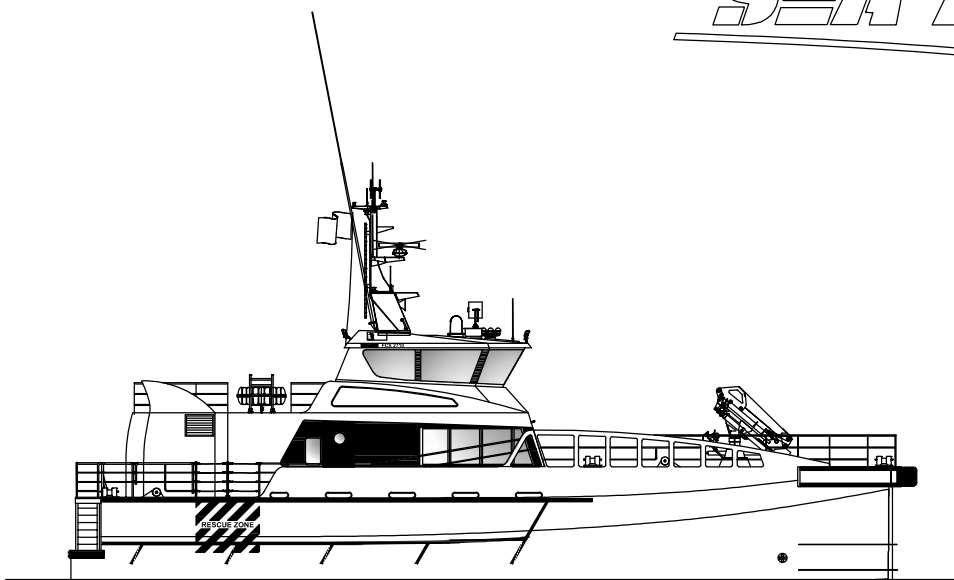
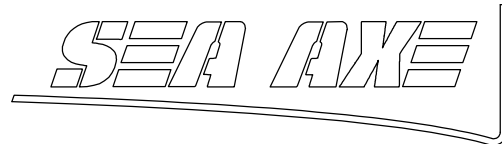


註：
最終船上乘客人數應依主管機關核定為準。

審閱範圍僅包含本中心船級規範要求之項目；
涉及航政法規之項目請逕送主管機關審核。



CR NO. 2701

Damen Fast Crew Supplier[®] 2710



Main dimensions

Length overall	26,80 m
Beam overall	10,50 m
Depth at sides	4,30 m
Draught max (approx.)	2,30 m

A01	27-03-2023	APAP01			Initially created				
Rev	Date	Drawn	Checked	Revision text					
Projection 									
Format		A1				DAMEN SHIPYARDS GORINCHEM			
Scale		1:75		Industrieterrein Avelingen West 20 4202 MS Gorinchem		P.O. Box 1 4200 AA Gorinchem		phone +31 (0) 183 63 99 11 fax +31 (0) 183 63 21 89	
Units		mm				The Netherlands		info@damen.com www.damen.com	
Engineering General Arrangement									
Doc class DRAW-2D			Drawn APAP01		Derived from			--	
Project No.		Function 000		Sequence		Checked		Date 27-03-2023	
Yard No.		Section/Compartment				Document number		Sheet	
HB		COPYRIGHT DAMEN SHIPYARDS GROUP				5332490		Revision 1 A01	