

**Orient Constructor / 東方建設者**

102 Man, DP2, 250MT AHC Crane, Comf V(3)C(3) CSOV



**Orient Constructor / 東方建設者**

102 Berths in 1-man and 2-man cabins
DPS-2 Class Positioning System
Built 2014
250MT AHC Main Crane
Two Auxiliary Cranes
DNV Comfort Class V(3)C(3)
1,300 m <sup>2</sup> Deck Space
Helideck
SPS Compliant
Twin ROV Hangers

11F., No. 257, Xueshi Rd., North Dist.,  
Taichung City 404, Taiwan (R.O.C.)

404 台中市北區學士路 257 號 11 樓

Tel: +886(0)-4-2206-0667

Email: [admin@dfo.com.tw](mailto:admin@dfo.com.tw)

Principal Particulars	
Flag	Taiwan
Built	2014, Kleven Verft AS, Norway
Length Overall	115.40 m
Length B.P	108.25 m
Beam	22.00 m
Depth Moulded	9.00 m
Max Draft	7.12 m
Deadweight	6,480 tons
GT / NT	7,883 / 2,364
ERN	99,99,99,99
Helideck	Suitable for Sikorsky S92N Helicopters, compliant with CAP437, 26.1 D-Value, 16 MT

Classification	
DNV 1A1 Clean(Design), COMF(C-3, V-3), DK(+), DYNPOS(AUTR), E0, HELDK(S), Ice(C), NAUT(OSV(A)), SF	

Capacities	
Fuel Oil	1,750 m <sup>3</sup>
Potable Water	1,250 m <sup>3</sup>
WB/DW	4,400 m <sup>3</sup>
Deck Cargo Area	1,300 m <sup>2</sup>
Deck Cargo	About 1,000 tons
Cargo Holds	346 m <sup>2</sup> (c/w hatches)
Cargo Deck Load	10 MT/m <sup>2</sup>

Accommodation	
1-Berth Cabins	24
2-Berth Cabins	39
Berths - Total	102
Hospital	1
Lounge	4 x Lounges
Mess Room	1 x 90 m <sup>2</sup>
Conference Room	1 x 30 m <sup>2</sup> and 1 x 16 m <sup>2</sup>
ROV Online Room	1 x 40 m <sup>2</sup>
ROV Offline Room	1 x 44 m <sup>2</sup>
Client Offices	2 x 12 m <sup>2</sup>
Gym	1 x 30 m <sup>2</sup>
Hospital	1 x 22 m <sup>2</sup>
Water Maker	1 x 35 MT/day

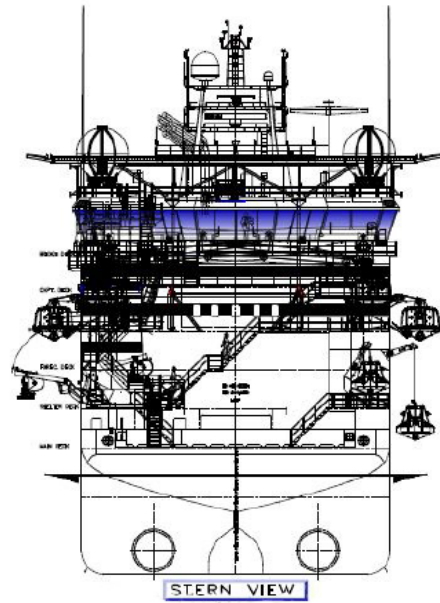
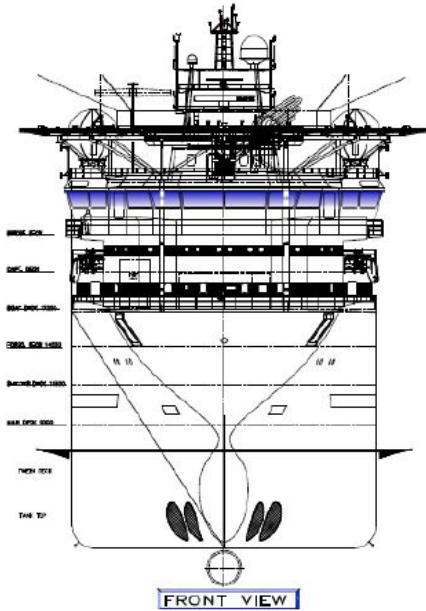
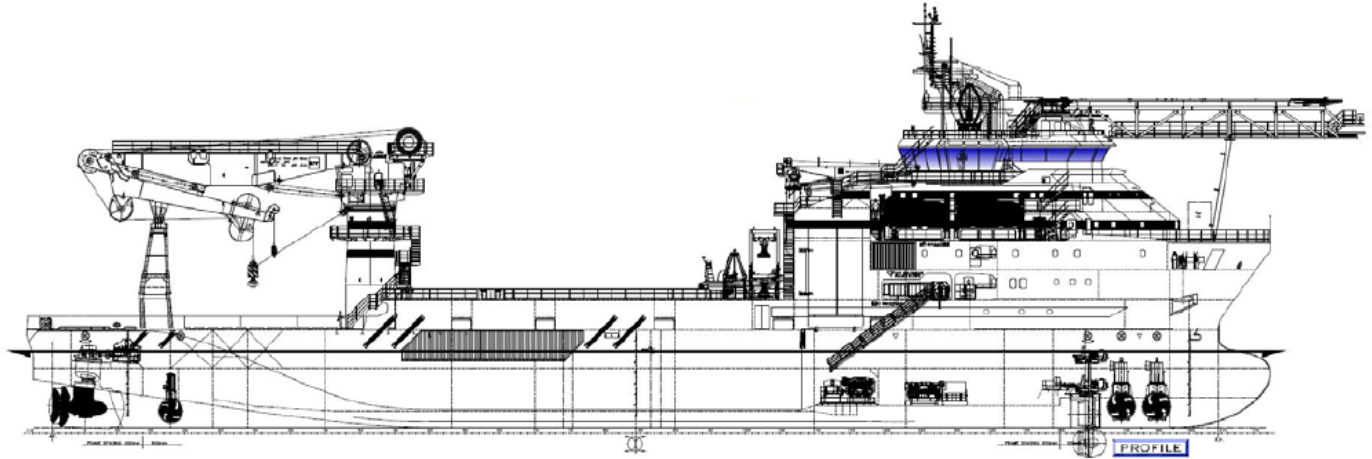
Machinery & Propulsion Equipment	
Main Generators	5 x CAT, 2,230 eKW each 1 x 1,700 kW (harbour)
Thrusters	Tunnel: 1 x 800 kW Tunnel Fwd: 2 x 1,370 kW Azimuth Fwd: 1 x 1,200 kW
Propulsion Thrusters	2 x 3,000 kW Contaz 25
Main Crane	1 x 250MT TTS Crane
Auxiliary Crane	2 x 5 MT @ 18m TTS 2 x 1 MT @ 12.28m Effer (inside ROV Hanger)

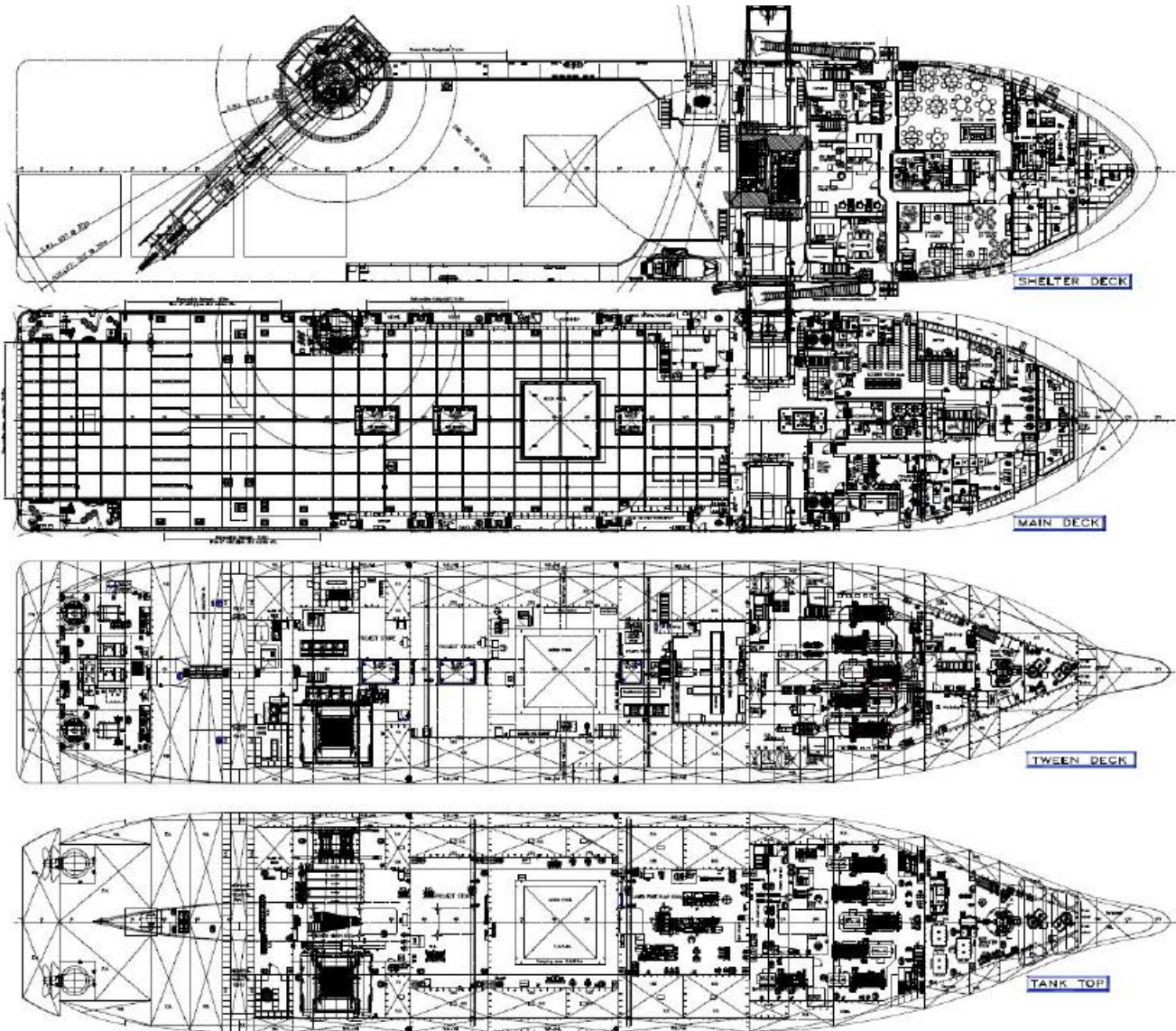
Dynamic Positioning System	
Type	Kongsberg, DP2
Reference Systems	2 x HiPAP 502 1 x Taut Wire 1 x Cyscan 1 x Radius 2 x DGPS
Control	3 x Operator Stations

Performance	
Service Speed	12.5 kts
Max Speed	14.1 kts
Economical Speed	10 kts
Fuel Consumption	Economical: 18 MT / day Transit (12-13 kt): 26 MT / day Maximum: 42 MT / day Port: 3-5 MT/day
DP Fuel Consumption	Heavy Seas: 12 MT / day Moderate Seas: 9 MT / day Light Seas: 7 MT / day

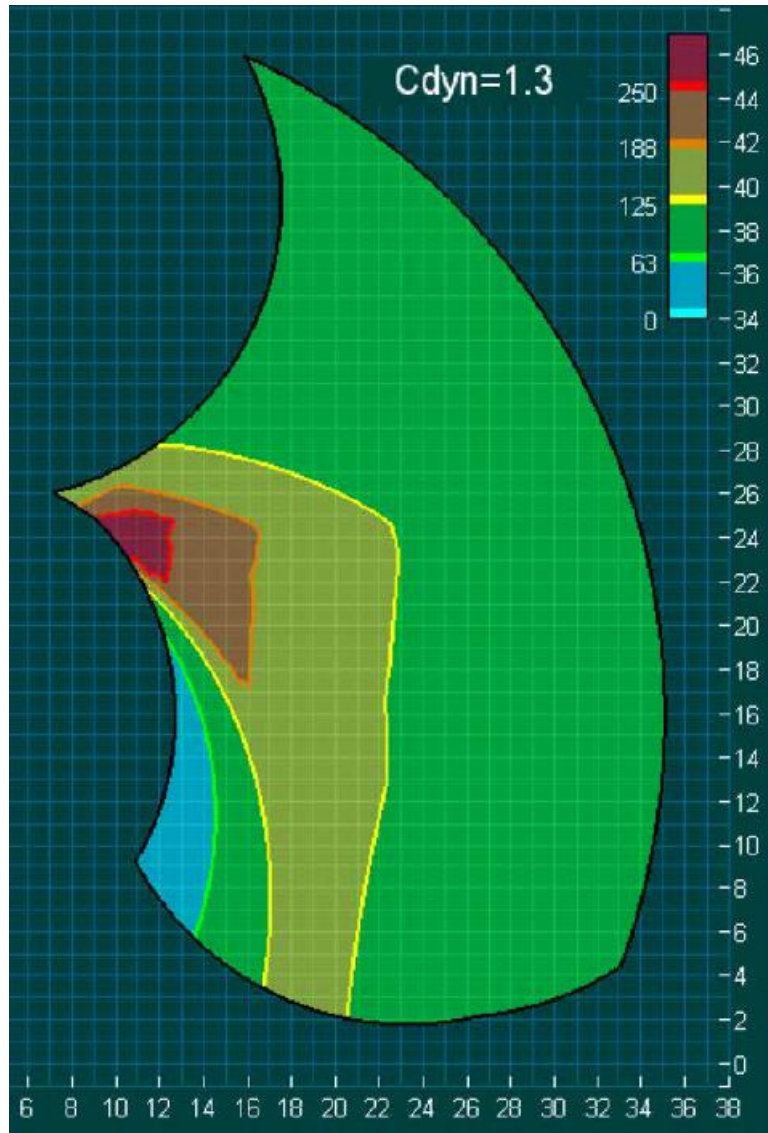
ROV & Moonpool	
Hanger	One hanger situated aft of the accommodation area, with large door to main deck.
LARS	1 x Ulmatec, AHC Winch with 5,500 m umbilical capacity 1 x Ulmatec, AHC Winch with 5,700 m umbilical capacity
Doors	Port & Starboard
Moonpool	1 fitted, 7.2 m x 7.2 m

### General Arrangement





**AHC Crane Curves**



Max lift capacity: 250 t/ 12 m  
 Max outreach: 65 t/ 35 m  
 Wire length: 3000 m  
 Hook speed fully loaded: 0-24 m/min  
 Hook speed light load: 0-65 m/min  
 Load chart shows maximum load, incl. wire and hook  
 Load chart shows boom tip height