



ORIENT NO.8

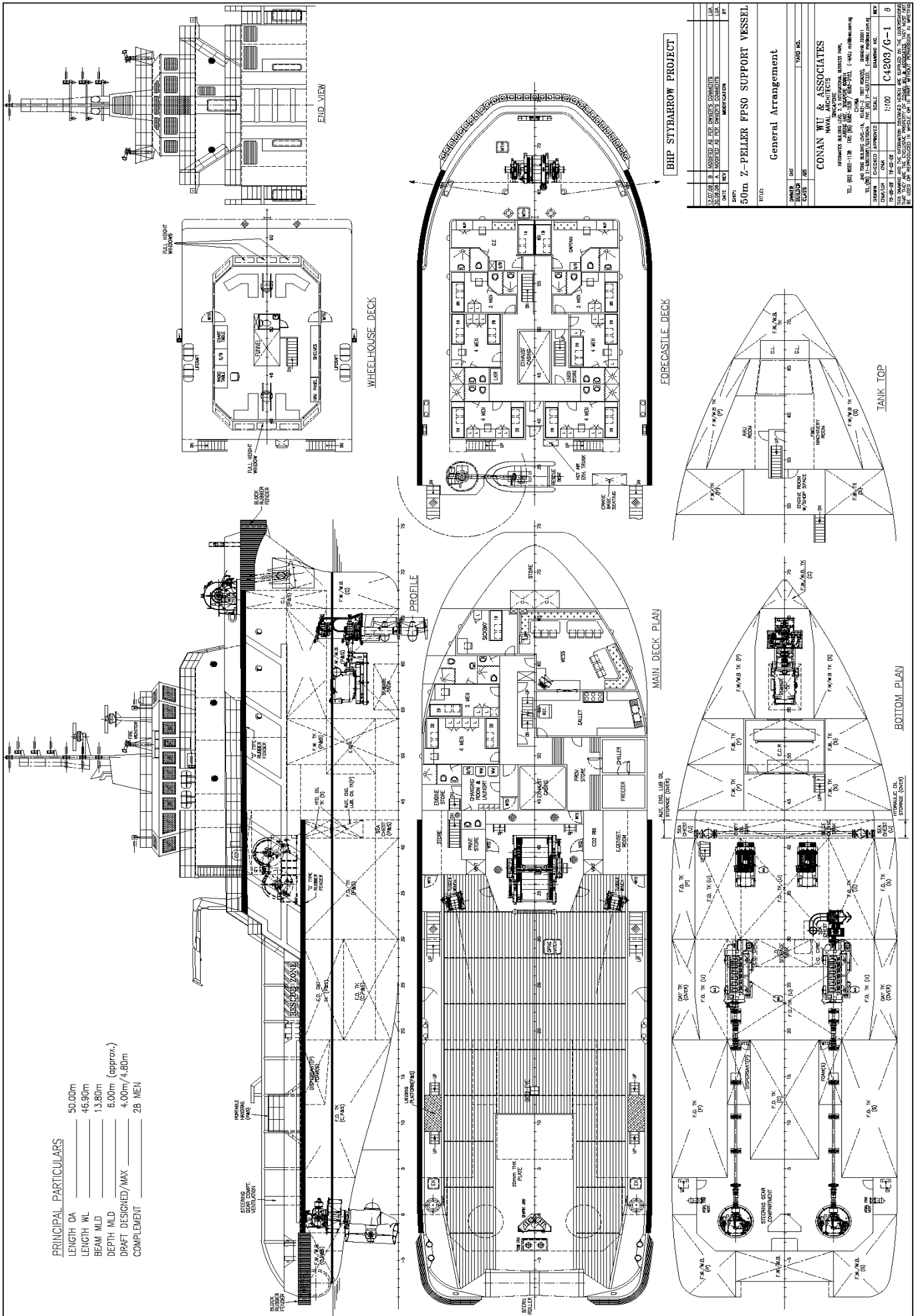
DONG FANG OFFSHORE CO., LTD.

VESSEL INFORMATION	
Flag	Taiwan
Builder	Sarawak Slipways Sdn. Bhd., Malaysia
Year of Delivery	2008
Classification	CR/ABS
Type	AHT / 5000 BHP / DP 1 / FIFI 1/2
Notations	✳A1, Towing Vessel, Offshore Support Vessel, AH, (E), ✳AMS, ✳ABCU, ✳DPS-1
PRINCIPAL PARTICULARS	
LOA	50.0 m
Length (BP)	46.9 m
Beam Moulded	13.8 m
Depth Moulded	6.0 m
Draft (Design)	4.0 m
Draft (Max)	4.8 m
Deadweight at max draft	1028 MT
GRT / NRT	1179 / 353
Deck area	260 m ²
Deck Strength	7.5 MT per sq.m.
Deck Carrying Capacity	300 MT minimum
SPEED	
Service Speed	10.0 knots
Maximum Speed	12.0 knots
BOLLARD PULL	
Bollard Pull	70.54 MT
ACCOMMODATION	
2 x 1-berth cabins	2
3 x 2-berth cabins	6
5 x 4-berth cabins	20
Total:	28 (fully air-con)
Complement	14
LIFE SAVING EQUIPMENT	
Inflatable liferaft	2 x 20 and 2 x 25-men
Rescue Boat	1 x 6-men, c/w 40HP outboard motor, davit-launched
FIRE-FIGHTING & ANTI-POLLUTION EQUIPMENT	
FIFI Class 1/2 with Water Spray	
Pump	1 x 5000 m ³ /hr
Monitor	2 x 600 m ³ /hr, 12 bar, 110m
Oil Dispersant System	2 x 6m spray boom with nozzles
PROPULSION SYSTEM	
Main Engine	2 x Niigata 6L28HX, 2500BHP each
Main Propulsion	2 x Z-Peller, mono-block, fixed pitch, 4 blade rotating kort nozzles.
Bow Thruster	1 x HRP 4000, Retractable Azimuth, Engine Driven, 8T thrust

GENERATORS	
Main Genset	2 x Cummins QSM11D, 415V / 3ph / 50Hz, 245kw
Emergency Genset	1 x 50kw 415V / 3ph / 50Hz
Electrical Sockets	5 x 415V, 3ph, 50Hz, 32A, 1 x 240V, 1ph, 50Hz, 32A
DP SYSTEM	
DP-1 (Converteam)	
TOWING & ANCHOR HANDLING EQUIPMENT	
Forward Tow Winch	PLIMSOLL – Hydraulic
Rated Pull (1st Layer)	Low Speed: 20T x 12m/min High Speed: 6.0Tx34m/min
Brake Holding	120T (static 1st layer)
Drum Cap.	500m x 56mm
Towing / Anchor handling winch	PLIMSOLL electro-hydraulic waterfall type double drum
Rate Pull (1st layer)	120 MT @ 5 m/min
Brake Holding	185 MT
Towing Drum Cap.	1000m x ø56mm
AH Drum Cap.	1000m x ø56mm
Towing pins	1 set x SWL 125 MT
Shark jaw	1 set x Plimsoll Shark Jaws, SWL 250 MT
Stern Roller	1 x 50kL4.2m x ø1.6~1.8m, SWL 250MT
DECK MACHINERY	
Anchors	2 x Bower Anchors, 1440kg each
Tugger Winch	2 x 10 MT @ 15 m/min
Deck Crane	1 x knuckle boom 1.25t@6m, 3t@3m outreach (HS MARINE)
Windlass	1 x 3.0T @ 14m/min. (PLIMSOLL)
Chain Cables	412.5m ø34mm, Gr.2
Capstan	2 x 5 MT @0-15 m/min
TANK CAPACITIES (100%)	
Fuel Oil	671 m ³
Lube Oil	21.5 m ³
Hydraulic Oil	6 m ³
Potable Water	340 m ³
Drill/FW/Ballast Water	309 m ³
Foam Tank	13.2 m ³
Dispersant Tank	13.2 m ³
Bilge Holding Tank	8.1 m ³
Dirty Oil Tank	8.1 m ³
PUMP CAPACITIES	
Fuel Oil Pump	1 x 100 m ³ /hr @75m
FW Cargo Pump	1 x 80 m ³ /hr @75m
Bilge & Ballest Pump	1 x 50 m ³ /hr @55m
GS & Fire Pump	1 x 50 m ³ /hr @55m
Detergent Pump	1 x 50 m ³ /hr @60m
MISCELLANEOUS	
Oily Water Separator	1 x Taiko Kikai OWS (Cap. 1 m ³ /hr)
Sewage Treatment Plant	1 x STP (Hamworthy Super Trident ST3A)

GENERAL ARRANGEMENT

PRINCIPAL PARTICULARS	
LENGTH OA	50.00m
LENGTH WL	46.90m
BEAM MLD	13.80m
DEPTH MLD	6.00m (approx.)
DRAFT DESIGNED/MAX	4.00m/4.80m
COMPLEMENT	28 MEN



DATE: 18/07/08		BY: LIA
CHECKED: 23/08/08		BY: LIA
APPROVED: 23/08/08		BY: LIA
MODIFICATION:		
50m Z-PPELLER FPSO SUPPORT VESSEL General Arrangement		
DESIGNED BY:	CONAN WU & ASSOCIATES	
DRAWN BY:	CONAN WU & ASSOCIATES	
CHECKED BY:	CONAN WU & ASSOCIATES	
APPROVED BY:	CONAN WU & ASSOCIATES	
SCALE:	1:100	
PROJECT NO.:	C4203/G-1	
DATE:	18/07/08	

